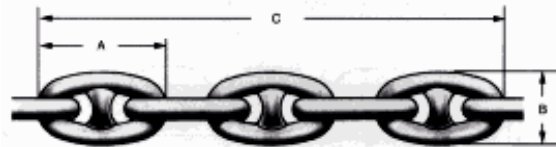


ACCESSORIES FOR ANCHOR CHAIN

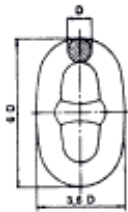


| Chain Size | | Dimensions (in) | | | | Test Requirements | | | | | | | |
|------------|----|-----------------|--------------|---------------------|--------------------------|-------------------|------------|------------|------------|------------|------------|------------------|------------|
| inch | mm | Link Length A | Link Width B | Length of 5-Links C | Weight Per 90' (approx.) | Grade 1 | | Grade 2 | | Grade 3 | | Oil Rig Quantity | |
| | | | | | | Proof Load | Break Load | Proof Load | Break Load | Proof Load | Break Load | Proof Load | Break Load |
| 5/8 | 16 | 3-3/4 | 2-1/4 | 13-3/4 | 365 | 16620 | 23745 | 23745 | 33220 | 33220 | 47465 | - | - |
| 3/4 | 19 | 4-1/2 | 2-5/8 | 16-1/2 | 480 | 23800 | 34000 | 34000 | 47600 | 47600 | 68000 | - | - |
| 13/16 | 20 | 4-7/8 | 2-7/8 | 17-7/8 | 570 | 27800 | 39800 | 39800 | 55700 | 55700 | 79500 | - | - |
| 7/8 | 22 | 5-1/4 | 3-1/8 | 19-1/4 | 660 | 32200 | 46000 | 46000 | 64400 | 64400 | 91800 | - | - |
| 15/16 | 24 | 5-5/8 | 3-5/16 | 20-5/8 | 760 | 3 6800 | 52600 | 52600 | 73700 | 73700 | 105000 | - | - |
| 1 | 25 | 6 | 3-9/16 | 22 | 860 | 41800 | 59700 | 59700 | 83600 | 83600 | 119500 | 84000 | 129000 |
| 1-1/8 | 28 | 6-3/4 | 4 | 24-3/4 | 1080 | 52600 | 75000 | 75000 | 105000 | 105000 | 150000 | 106000 | 161000 |
| 1-3/16 | 30 | 7-1/8 | 4-1/4 | 26-1/8 | 1220 | 58400 | 83400 | 83400 | 116500 | 116500 | 167000 | - | - |
| 1-1/4 | 32 | 7-1/2 | 4-1/2 | 27-1/2 | 1350 | 64500 | 92200 | 92200 | 129000 | 129000 | 184000 | 130000 | 198000 |
| 1-3/8 | 34 | 8-1/4 | 4-15/16 | 30-1/4 | 1630 | 77500 | 111000 | 111000 | 155000 | 155000 | 222000 | 157000 | 235000 |
| 1-7/16 | 36 | 8-5/8 | 5-3/16 | 31-5/8 | 1780 | 84500 | 120500 | 120500 | 169000 | 169000 | 241000 | - | - |
| 1-1/2 | 38 | 9 | 5-3/8 | 33 | 1940 | 91700 | 131000 | 131000 | 183500 | 183500 | 262000 | 185000 | 280000 |
| 1-9/16 | 40 | 9-3/8 | 5-5/8 | 34-3/8 | 2090 | 99200 | 142000 | 142000 | 198500 | 198500 | 284000 | - | - |
| 1-5/8 | 42 | 9-3/4 | 5-7/8 | 35-3/4 | 2240 | 108000 | 153000 | 153000 | 214000 | 214000 | 306000 | 216000 | 325000 |
| 1-3/4 | 44 | 10-1/2 | 6-5/16 | 38-1/2 | 2590 | 123500 | 176000 | 176000 | 247000 | 247000 | 352000 | 249000 | 380000 |
| 1-13/16 | 46 | 10-7/8 | 6-1/2 | 39-7/8 | 2790 | 132000 | 188500 | 188500 | 264000 | 264000 | 377000 | - | - |
| 1-7/8 | 48 | 11-1/4 | 6-3/4 | 41-1/4 | 2980 | 140500 | 201000 | 201000 | 281000 | 281000 | 402000 | 285000 | 432000 |
| 2 | 50 | 12 | 7-3/16 | 44 | 3180 | 149500 | 214000 | 214000 | 299000 | 299000 | 427000 | - | - |
| 2-1/16 | 52 | 12-3/8 | 7-7/16 | 45-3/8 | 3570 | 168500 | 241000 | 241000 | 337000 | 337000 | 482000 | 342000 | 518000 |

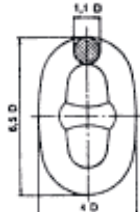
| | | | | | | | | | | | | | |
|---------|-----|--------|----------|--------|-------|--------|--------|--------|---------|---------|---------|---------|---------|
| 2-1/8 | 54 | 12-3/4 | 7-5/8 | 46-3/4 | 3790 | 178500 | 255000 | 255000 | 357000 | 357000 | 510000 | 362000 | 548000 |
| 2-3/16 | 56 | 13-1/8 | 7-7/8 | 48-1/8 | 4020 | 188500 | 269000 | 269000 | 377000 | 377000 | 538000 | 382500 | 579100 |
| 2-1/4 | 58 | 13-1/2 | 8-1/8 | 49-1/2 | 4250 | 198500 | 284000 | 284000 | 396000 | 396000 | 570000 | 403000 | 610000 |
| 2-3/8 | 60 | 14-1/4 | 8-9/16 | 52-1/4 | 4730 | 212000 | 314000 | 314000 | 440000 | 440000 | 628000 | 447000 | 675000 |
| 2-7/16 | 62 | 14-5/8 | 8-3/4 | 53-5/8 | 4960 | 231000 | 330000 | 330000 | 462000 | 462000 | 660000 | 469500 | 709500 |
| 2-1/2 | 64 | 15 | 9 | 55 | 5270 | 242000 | 346000 | 346000 | 484000 | 484000 | 692000 | 492000 | 744000 |
| 2-9/16 | 66 | 15-3/8 | 9-1/4 | 56-3/8 | 5540 | 254000 | 363000 | 363000 | 507000 | 507000 | 726000 | 516000 | 778500 |
| 2-5/8 | 67 | 15-3/4 | 9-7/16 | 57-3/4 | 5820 | 265000 | 379000 | 379000 | 530000 | 530000 | 758000 | 540000 | 813000 |
| 2-11/16 | 68 | 16-1/8 | 9-11/16 | 59-1/8 | 6110 | 277000 | 396000 | 396000 | 554000 | 554000 | 792000 | 565000 | 849000 |
| 2-3/4 | 70 | 16-1/2 | 9-7/8 | 60-1/2 | 6410 | 289000 | 413000 | 413000 | 578000 | 578000 | 826000 | 590000 | 885000 |
| 2-7/8 | 73 | 17-1/4 | 10-3/8 | 63-1/4 | 7020 | 314000 | 449000 | 449000 | 628000 | 628000 | 897000 | 640000 | 965000 |
| 3 | 76 | 18 | 10-13/16 | 66 | 7650 | 340000 | 485000 | 485000 | 679000 | 679000 | 970000 | 693000 | 1045000 |
| 3-1/16 | 78 | 18-3/8 | 11 | 67-3/8 | 7980 | 353000 | 504000 | 504000 | 705000 | 705000 | 1008000 | 720500 | 1086500 |
| 3-3/16 | 81 | 19-1/8 | 11-1/2 | 70-1/8 | 8660 | 380000 | 542000 | 542000 | 759000 | 759000 | 1084000 | 776050 | 1169000 |
| 3-1/4 | 83 | 19-1/2 | 11-11/16 | 71-1/2 | 9010 | 393000 | 562000 | 562000 | 787000 | 787000 | 1124000 | 804100 | 1210000 |
| 3-5/16 | 84 | 19-7/8 | 11-15/16 | 72-7/8 | 9360 | 407000 | 582000 | 582000 | 814000 | 814000 | 1163000 | 833150 | 1253000 |
| 3-3/8 | 86 | 20-1/4 | 12-1/8 | 74-1/4 | 9730 | 421000 | 602000 | 602000 | 843000 | 843000 | 1204000 | 862200 | 1296000 |
| 3-7/16 | 87 | 20-5/8 | 12-3/8 | 75-5/8 | 10100 | 435000 | 622000 | 622000 | 871000 | 871000 | 1244000 | 892100 | 1339550 |
| 3-1/2 | 90 | 21 | 12-5/8 | 77 | 10500 | 450000 | 643000 | 643000 | 900000 | 900000 | 1285000 | 922000 | 1383100 |
| 3-5/8 | 92 | 21-3/4 | 12-15/16 | 79-3/4 | 11300 | 479000 | 685000 | 685000 | 958000 | 958000 | 1369000 | 1021000 | 1566000 |
| 3-3/4 | 95 | 22-1/2 | 13-3/8 | 82-1/8 | 12000 | 509000 | 728000 | 728000 | 1019000 | 1019000 | 1455000 | 1120000 | 1750000 |
| 3-7/8 | 98 | 23-1/4 | 14 | 85-1/4 | 12900 | 540000 | 772000 | 772000 | 1080000 | 1080000 | 1543000 | 1205000 | 1863000 |
| 4 | 102 | 24 | 14-3/8 | 88 | 13700 | 571000 | 816000 | 816000 | 1143000 | 1143000 | 1632000 | 1298000 | 1996500 |

ACCESSORIES FOR ANCHOR CHAIN

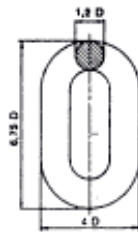
a. Common Link



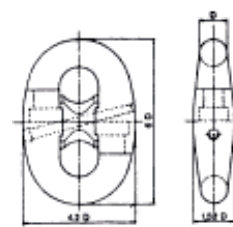
b. Enlarged Link



c. End Link

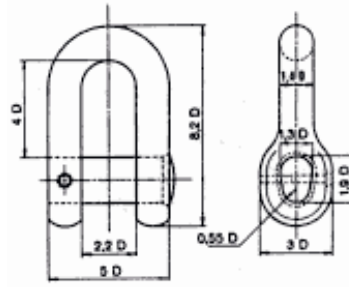
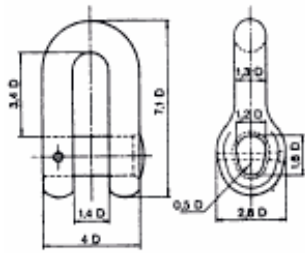


e. Kenter Shackle

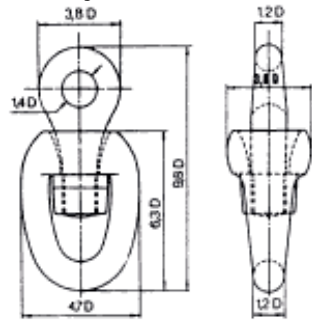


f. D Type Joining Shackle

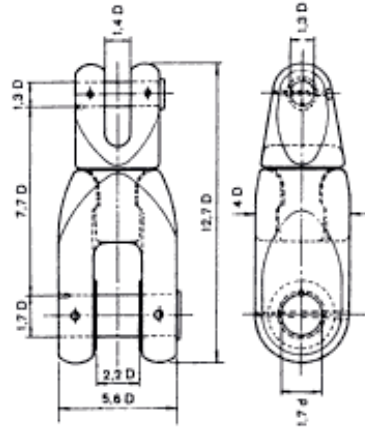
g. D Type Anchor Shackle



j. Swivel



k. Swivel Shackle



COIL CHAIN



NACM90 STRAIGHT LINK COIL CHAIN

| Trade Size | | Material Diameter | | | Working Load | | Min. Breaking Load | | Inside Length | | Inside Width | |
|------------|-----|-------------------|-------|-----|--------------|-------|--------------------|------|---------------|-------|--------------|--|
| No | mm | mm | inch | kg | lb | kg | lb | mm | inch | mm | inch | |
| 4 | 3.0 | 3.0 | 0.120 | 93 | 205 | 372 | 820 | 28.1 | 1.11 | 5.32 | 0.21 | |
| 3 | 3.4 | 3.4 | 0.135 | 116 | 255 | 463 | 1,020 | 29.8 | 1.17 | 6.09 | 0.24 | |
| 2 | 3.8 | 3.8 | 0.148 | 140 | 310 | 562 | 1,240 | 29.9 | 1.18 | 6.59 | 0.26 | |
| 1 | 4.1 | 4.1 | 0.162 | 168 | 370 | 671 | 1,480 | 31.7 | 1.25 | 7.10 | 0.28 | |
| 1/0 | 4.5 | 4.5 | 0.177 | 200 | 440 | 798 | 1,760 | 31.7 | 1.25 | 7.86 | 0.31 | |
| 2/0 | 4.9 | 4.9 | 0.192 | 236 | 520 | 943 | 2,080 | 31.9 | 1.26 | 8.62 | 0.34 | |
| 3/0 | 5.3 | 5.3 | 0.207 | 274 | 605 | 1,098 | 2,420 | 32.9 | 1.30 | 9.13 | 0.36 | |
| 4/0 | 5.5 | 5.5 | 0.218 | 304 | 670 | 1,216 | 2,680 | 35.2 | 1.39 | 9.64 | 0.38 | |
| 5/0 | 6.4 | 6.4 | 0.250 | 400 | 880 | 1,597 | 3,520 | 38.5 | 1.52 | 11.20 | 0.44 | |



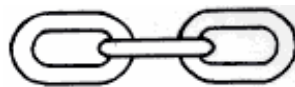
NACM90 TWIST LINK COIL CHAIN

| Trade Size | | Material Diameter | | | Working Load | | Min. Breaking Load | | Inside Length | | Inside Width | |
|------------|-----|-------------------|-------|-----|--------------|-----|--------------------|------|---------------|------|--------------|--|
| No | mm | mm | inch | kg | lb | kg | lb | mm | inch | mm | inch | |
| 4 | 3.0 | 3.0 | 0.120 | 88 | 195 | 354 | 780 | 27.6 | 1.09 | 4.56 | 0.18 | |
| 3 | 3.4 | 3.4 | 0.135 | 110 | 240 | 440 | 970 | 28.9 | 1.14 | 5.32 | 0.21 | |
| 2 | 3.8 | 3.8 | 0.148 | 134 | 295 | 535 | 1,180 | 29.1 | 1.15 | 5.58 | 0.22 | |
| 1 | 4.1 | 4.1 | 0.162 | 160 | 350 | 637 | 1,405 | 30.9 | 1.22 | 6.34 | 0.25 | |

| | | | | | | | | | | | |
|-----|-----|-----|-------|-----|-----|-------|-------|------|------|------|------|
| 1/0 | 4.5 | 4.5 | 0.177 | 188 | 415 | 758 | 1,670 | 30.9 | 1.22 | 6.85 | 0.27 |
| 2/0 | 4.9 | 4.9 | 0.192 | 225 | 495 | 896 | 1,975 | 31.4 | 1.24 | 7.36 | 0.29 |
| 3/0 | 5.3 | 5.3 | 0.207 | 260 | 575 | 1,043 | 2,300 | 31.9 | 1.26 | 8.12 | 0.32 |
| 4/0 | 5.5 | 5.5 | 0.218 | 288 | 635 | 1,154 | 2,545 | 34.0 | 1.34 | 8.32 | 0.33 |
| 5/0 | 6.4 | 6.4 | 0.250 | 380 | 835 | 1,517 | 3,345 | 37.3 | 1.47 | 9.65 | 0.38 |

5978 Armour Drive Houston, Texas 77020 | Tel: (713) 678-8141 | Toll Free: (866) 678-8141 | Fax: (713)678-8624

MACHINE CHAIN



NACM90 STRAIGHT LINK MACHINE CHAIN

| Trade Size | | Material Diameter | | | Working Load | | Min. Breaking Load | | Inside Length | | Inside Width | |
|------------|-----|-------------------|-------|-----|--------------|-------|--------------------|------|---------------|------|--------------|--|
| No | mm | mm | inch | kg | lb | kg | lb | mm | inch | mm | inch | |
| 4 | 3.0 | 3.0 | 0.120 | 98 | 215 | 390 | 860 | 14.0 | 0.55 | 5.3 | 0.21 | |
| 3 | 3.4 | 3.4 | 0.135 | 122 | 270 | 490 | 1,080 | 15.0 | 0.59 | 6.1 | 0.24 | |
| 2 | 3.8 | 3.8 | 0.148 | 147 | 325 | 590 | 1,300 | 15.5 | 0.61 | 6.6 | 0.26 | |
| 1 | 4.1 | 4.1 | 0.162 | 177 | 390 | 708 | 1,560 | 16.0 | 0.63 | 7.1 | 0.28 | |
| 1/0 | 4.5 | 4.5 | 0.177 | 211 | 465 | 844 | 1,860 | 18.8 | 0.74 | 7.9 | 0.31 | |
| 2/0 | 4.9 | 4.9 | 0.192 | 247 | 545 | 989 | 2,180 | 19.8 | 0.78 | 8.6 | 0.34 | |
| 3/0 | 5.3 | 5.3 | 0.207 | 288 | 635 | 1,152 | 2,540 | 21.6 | 0.85 | 9.1 | 0.36 | |
| 4/0 | 5.5 | 5.5 | 0.218 | 318 | 700 | 1,270 | 2,800 | 25.1 | 0.99 | 9.6 | 0.38 | |
| 5/0 | 6.4 | 6.4 | 0.250 | 420 | 925 | 1,678 | 3,700 | 27.2 | 1.07 | 11.2 | 0.44 | |



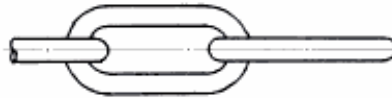
NACM90 TWIST LINK MACHINE CHAIN

| Trade Size | | Material Diameter | | | Working Load | | Min. Breaking Load | | Inside Length | | Inside Width | |
|------------|-----|-------------------|-------|-----|--------------|-----|--------------------|------|---------------|-----|--------------|--|
| No | mm | mm | inch | kg | lb | kg | lb | mm | inch | mm | inch | |
| 4 | 3.0 | 3.0 | 0.120 | 93 | 205 | 372 | 820 | 13.1 | 0.52 | 4.3 | 0.17 | |
| 3 | 3.4 | 3.4 | 0.135 | 116 | 255 | 463 | 1,020 | 14.2 | 0.56 | 5.1 | 0.20 | |
| 2 | 3.8 | 3.8 | 0.148 | 141 | 310 | 562 | 1,240 | 14.7 | 0.58 | 5.3 | 0.21 | |
| 1 | 4.1 | 4.1 | 0.162 | 168 | 370 | 671 | 1,480 | 15.0 | 0.59 | 6.1 | 0.24 | |

| | | | | | | | | | | | |
|-----|-----|-----|-------|-----|-----|-------|-------|------|------|-----|------|
| 1/0 | 4.5 | 4.5 | 0.177 | 200 | 440 | 798 | 1,760 | 17.2 | 0.68 | 6.6 | 0.26 |
| 2/0 | 4.9 | 4.9 | 0.192 | 236 | 520 | 943 | 2,080 | 18.5 | 0.73 | 7.1 | 0.28 |
| 3/0 | 5.3 | 5.3 | 0.207 | 274 | 605 | 1,098 | 2,420 | 20.3 | 0.80 | 7.9 | 0.31 |
| 4/0 | 5.5 | 5.5 | 0.218 | 304 | 670 | 1,216 | 2,680 | 22.5 | 0.89 | 8.1 | 0.32 |
| 5/0 | 6.4 | 6.4 | 0.250 | 400 | 880 | 1,597 | 3,520 | 25.3 | 1.00 | 9.4 | 0.37 |

5978 Armour Drive Houston, Texas 77020 | Tel: (713) 678-8141 | Toll Free: (866) 678-8141 | Fax: (713)678-8624

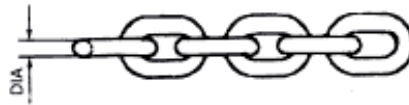
ORDINARY STEEL LINK CHAIN



LONG LINK CHAIN

| Diameter | | Inside Length | Outside Width | Test Load | Breaking Load | Approx. Weight | |
|----------|-------|---------------|---------------|-----------|---------------|----------------|-------------|
| | | | | | | Bright kg/100' | HDG kg/100' |
| inch | mm | mm | mm | kg | kg | kg/100' | kg/100' |
| 1/8 | 3.20 | 23 | 12 | 200 | 400 | 5.2 | 5.4 |
| 3/16 | 4.70 | 31 | 17 | 400 | 800 | 11.2 | 11.7 |
| 7/32 | 5.50 | 32 | 19 | 500 | 1,100 | 16.0 | 16.5 |
| 1/4 | 6.35 | 33 | 21 | 750 | 1,500 | 21.8 | 22.4 |
| 5/16 | 7.94 | 48 | 31 | 1,200 | 2,400 | 34.0 | 35.0 |
| 3/8 | 9.50 | 60 | 37 | 1,700 | 3,400 | 48.0 | 49.5 |
| 7/16 | 11.11 | 71 | 41 | 2,300 | 4,600 | 63.0 | 64.5 |
| 1/2 | 12.70 | 85 | 48.5 | 3,000 | 6,000 | 83.5 | 86.0 |
| 5/8 | 15.80 | 114 | 61.5 | 4,700 | 9,400 | 128.0 | 132.0 |
| 3/4 | 19.00 | 125 | 75 | 6,800 | 13,600 | 191.0 | 196.0 |
| 7/8 | 22.20 | 140 | 88 | 9,250 | 18,500 | 264.0 | 272.0 |
| 1 | 25.40 | 155 | 100 | 12,150 | 24,300 | 348.0 | 358.0 |

BARGE CHAIN



* Painted black or galvanized

| Dia (in) | Inner Length (in) | Inner Width (in) | Link # | MBS (lbs) | Weight (lbs) |
|----------|-------------------|------------------|--------|-----------|--------------|
| 1 | 5 | 2 | 6 | 80000 | 20.00 |
| 1 | 5 | 2 | 8 | 80000 | 26.43 |

**STAINLESS STEEL LINK CHAIN
TYPE 304**

ASTM80 STANDARD GRADE 30

| Nominal Diameter | | Min. Breaking Strength | Unit Weight Per 100' | Inside Length | Inside Width |
|------------------|------|------------------------|----------------------|---------------|--------------|
| inch | mm | lb | lb | inch | inch |
| 1/8 | 4.0 | 1,700 | 20 | 0.89 | 0.29 |
| 3/16 | 5.5 | 3,200 | 41 | 0.95 | 0.40 |
| 1/4 | 7.1 | 5,300 | 72 | 1.00 | 0.50 |
| 5/16 | 8.7 | 8,000 | 106 | 1.10 | 0.50 |
| 3/8 | 10.3 | 11,200 | 155 | 1.23 | 0.62 |
| 1/2 | 13.5 | 19,300 | 271 | 1.53 | 0.80 |

NACM84/90 STANDARD GRADE 30

| Nominal Diameter | | Min. Breaking Strength | Unit Weight Per 100' | Inside Length | Inside Width |
|------------------|------|------------------------|----------------------|---------------|--------------|
| inch | mm | lb | lb | inch | inch |
| 1/8 | 4.0 | 1,600 | 19.8 | 0.94 | 0.25 |
| 3/16 | 5.5 | 3,200 | 40.3 | 0.98 | 0.30 |
| 1/4 | 7.0 | 5,200 | 66.1 | 1.24 | 0.38 |
| 5/16 | 8.0 | 6,800 | 86.0 | 1.29 | 0.44 |
| 3/8 | 10.0 | 10,600 | 142 | 1.38 | 0.55 |
| 1/2 | 13.0 | 17,900 | 242 | 1.79 | 0.72 |

Also Available in Type 316 as well as Grade 43

BINDER CHAIN



CHAINS WITH CLEVIS HOOKS ON BOTH ENDS

| Size | ASTM80 | | | NACM90 | | | NACM96 | | | Pcs Per Drum |
|-----------------|------------|-----------|-----------|------------|-----------|-----------|------------|-----------|-----------|--------------|
| | W.T. kg | WLL lb | MBS lb | W.T. kg | WLL lb | MBS lb | W.T. kg | WLL lb | MBS lb | |
| Grade 43 | | | | | | | | | | |
| 1/4" x 14' | 5.0 | 2,600 | 7,500 | 4.5 | 2,600 | 7,500 | 4.5 | 2,600 | 7,800 | 50 |
| 1/4" x 16' | 6.0 | 2,600 | 7,500 | 5.0 | 2,600 | 7,500 | 5.0 | 2,600 | 7,800 | 40 |
| 5/16" x 14' | 7.5 | 3,900 | 11,600 | 6.0 | 3,900 | 9,700 | 7.0 | 3,900 | 11,700 | 35 |
| 5/16" x 16' | 8.5 | 3,900 | 11,600 | 6.8 | 3,900 | 9,700 | 8.0 | 3,900 | 11,700 | 30 |
| 5/16" x 18' | 9.5 | 3,900 | 11,600 | 7.5 | 3,900 | 9,700 | 9.0 | 3,900 | 11,700 | 30 |
| 5/16" x 20' | 10.5 | 3,900 | 11,600 | 8.0 | 3,900 | 9,700 | 9.5 | 3,900 | 11,700 | 25 |
| 5/16" x 25' | 13.0 | 3,900 | 11,600 | 10.0 | 3,900 | 9,700 | 12.0 | 3,900 | 11,700 | 20 |
| 5/16" x 30' | 15.5 | 3,900 | 11,600 | 12.0 | 3,900 | 9,700 | 14.0 | 3,900 | 11,700 | 20 |
| 3/8" x 14' | 10.5 | 5,400 | 16,200 | 9.5 | 5,400 | 15,200 | 10.0 | 5,400 | 16,200 | 25 |
| 3/8" x 16' | 12.0 | 5,400 | 16,200 | 11.0 | 5,400 | 15,200 | 11.5 | 5,400 | 16,200 | 25 |
| 3/8" x 20' | 15.0 | 5,400 | 16,200 | 13.5 | 5,400 | 15,200 | 13.5 | 5,400 | 16,200 | 20 |
| 3/8" x 25' | 18.5 | 5,400 | 16,200 | 16.5 | 5,400 | 15,200 | 17.5 | 5,400 | 16,200 | 20 |
| Grade 70 | | | | | | | | | | |
| 1/4" x 14' | 5.0 | 3,150 | 12,600 | 4.5 | 3,150 | 12,100 | 4.0 | 3,150 | 12,600 | 50 |
| 1/4" x 16' | 6.0 | 3,150 | 12,600 | 5.0 | 3,150 | 12,100 | 5.0 | 3,150 | 12,600 | 40 |
| 5/16" x 14' | 7.5 | 4,700 | 18,800 | 6.0 | 4,700 | 18,800 | 7.0 | 4,700 | 18,800 | 35 |
| 5/16" x 16' | 8.5 | 4,700 | 18,800 | 6.8 | 4,700 | 18,800 | 8.0 | 4,700 | 18,800 | 30 |
| 5/16" x 18' | 9.5 | 4,700 | 18,800 | 7.5 | 4,700 | 18,800 | 9.0 | 4,700 | 18,800 | 30 |
| 5/16" x 20' | 10.5 | 4,700 | 18,800 | 8.0 | 4,700 | 18,800 | 10.0 | 4,700 | 18,800 | 25 |
| 5/16" x 25' | 13.0 | 4,700 | 18,800 | 10.0 | 4,700 | 18,800 | 12.0 | 4,700 | 18,800 | 20 |
| 5/16" x 30' | 15.5 | 4,700 | 18,800 | 12.0 | 4,700 | 18,800 | 14.5 | 4,700 | 18,800 | 20 |
| 3/8" x 14' | 10.5 | 6,600 | 26,400 | 9.5 | 6,600 | 24,700 | 10.0 | 6,600 | 26,400 | 25 |

| | | | | | | | | | | |
|------------|------|-------|--------|------|-------|--------|------|-------|--------|----|
| 3/8" x 16' | 12.0 | 6,600 | 26,400 | 11.0 | 6,600 | 24,700 | 11.5 | 6,600 | 26,400 | 20 |
| 3/8" x 20' | 15.0 | 6,600 | 26,400 | 13.5 | 6,600 | 24,700 | 14.5 | 6,600 | 26,400 | 20 |
| 3/8" x 25' | 18.5 | 6,600 | 26,400 | 16.5 | 6,600 | 24,700 | 18.0 | 6,600 | 26,400 | 15 |

Available in Self-Colored and Yellow Chromate.

5978 Armour Drive Houston, Texas 77020 | Tel: (713) 678-8141 | Toll Free: (866) 678-8141 | Fax: (713)678-8624

NACM96 STANDARD LINK CHAIN



TRANSPORT CHAIN NACM96 (G70)

NOT INTENDED FOR OVERHEAD LIFTING

| Nominal Size | | Working Load Limit (max) | | Proof Load(min) | | Min.Breaking Load | | Unit Weight Per 100' | | Inside Length (max) | | Inside Width (min) | |
|--------------|------|--------------------------|-------|-----------------|--------|-------------------|--------|----------------------|-----|---------------------|--------|--------------------|--------|
| inches | mm | kg | lb | kn | lb | kn | lb | kg | lb | mm | inches | mm | inches |
| 1/4 | 7.0 | 1,430 | 3,150 | 28.0 | 6,300 | 56.0 | 12,600 | 30.0 | 66 | 31.5 | 1.24 | 9.8 | 0.38 |
| 5/16 | 8.7 | 2,130 | 4,700 | 41.8 | 9,400 | 83.5 | 18,800 | 47.0 | 104 | 32.8 | 1.29 | 11.2 | 0.44 |
| 3/8 | 10.3 | 2,990 | 6,600 | 58.7 | 13,200 | 117.4 | 26,400 | 69.0 | 152 | 35.0 | 1.38 | 14.0 | 0.55 |

Available in Yellow Chromate Finish

ASTM80 STANDARD LINK CHAIN



HIGH TEST CHAIN ASTM80 (G43)

NOT INTENDED FOR OVERHEAD LIFTING

| Nominal Size | | Working Load Limit (max) | | Proof Load(min) | | Min.Breaking Load | | Weight Per 100' | | Inside Length (max) | | Inside Width (min) | |
|--------------|------|--------------------------|-------|-----------------|--------|-------------------|--------|-----------------|-----|---------------------|--------|--------------------|--------|
| inches | mm | kg | lb | kn | lb | kn | lb | kg | lb | mm | inches | mm | inches |
| 1/4 | 7.1 | 1,180 | 2,600 | 19.1 | 4,300 | 34.5 | 7,750 | 36.3 | 80 | 21.8 | 0.86 | 10.2 | 0.40 |
| 5/16 | 8.7 | 1,770 | 3,900 | 28.4 | 6,400 | 51.6 | 11,600 | 50.4 | 111 | 26.7 | 1.05 | 12.2 | 0.48 |
| 3/8 | 10.3 | 2,450 | 5,400 | 39.6 | 8,900 | 72.0 | 16,200 | 72.6 | 160 | 30.3 | 1.19 | 14.7 | 0.58 |
| 1/2 | 13.5 | 4,170 | 9,200 | 68.0 | 15,300 | 122.7 | 27,600 | 128.6 | 284 | 36.0 | 1.43 | 19.1 | 0.75 |

Available in Hot Dipped Galvanized, Electro Galvanized, and Self-Colored.

NACM84/90 STANDARD LINK CHAIN



HIGH TEST CHAIN NACM84/90 (G43)

NOT INTENDED FOR OVERHEAD LIFTING

| Nominal Size | | Working Load Limit (max) | | Proof Load(min) | | Min.Breaking Load | | Weight Per 100' | | Inside Length (max) | | Inside Width (min) | |
|--------------|-----|--------------------------|-------|-----------------|-------|-------------------|-------|-----------------|------|---------------------|--------|--------------------|--------|
| inches | mm | kg | lb | kn | lb | kn | lb | kg | lb | mm | inches | mm | inches |
| 1/4 | 7.0 | 1,180 | 2,600 | 16.6 | 3,750 | 33.1 | 7,500 | 30.0 | 66.1 | 31.5 | 1.24 | 9.8 | 0.38 |
| 5/16 | 8.0 | 1,770 | 3,900 | 21.6 | 4,900 | 43.2 | 9,700 | 39.0 | 86.0 | 32.8 | 1.29 | 11.2 | 0.44 |

| | | | | | | | | | | | | | |
|-----|------|-------|-------|------|--------|-------|--------|------|-----|------|------|------|------|
| 3/8 | 10.0 | 2,450 | 5,400 | 33.0 | 7,600 | 67.6 | 15,200 | 67.3 | 148 | 35.0 | 1.38 | 14.0 | 0.55 |
| 1/2 | 13.0 | 4,170 | 9,200 | 57.1 | 12,900 | 114.2 | 25,700 | 110 | 242 | 45.5 | 1.79 | 18.2 | 0.72 |

Available in Hot Dipped Galvanized, Electro Galvanized, and Self-Colored.

5978 Armour Drive Houston, Texas 77020 | Tel: (713) 678-8141 | Toll Free: (866) 678-8141 | Fax: (713)678-8624

ASTM80 STANDARD LINK CHAIN



PROOF COIL CHAIN ASTM80 (G30)
NOT INTENDED FOR OVERHEAD LIFTING

| Nominal Size | | Working Load Limit (max) | | Proof Load (min) | | Min. Breaking Load | | Weight Per 100' | | Inside Length (max) | | Inside Width (min) | |
|--------------|------|--------------------------|--------|------------------|--------|--------------------|--------|-----------------|------|---------------------|--------|--------------------|--------|
| inches | mm | kg | lb | kn | lb | kn | lb | kg | lb | mm | inches | mm | inches |
| 1/8 | 4.0 | 190 | 420 | 3.78 | 850 | 7.56 | 1,700 | 8.8 | 19 | 22.6 | 0.89 | 7.4 | 0.29 |
| 3/16 | 5.5 | 360 | 800 | 7.11 | 1,600 | 14.2 | 3,200 | 18.3 | 40 | 24.1 | 0.95 | 10.2 | 0.40 |
| 1/4 | 7.1 | 600 | 1,330 | 11.8 | 2,650 | 23.6 | 5,300 | 32.7 | 72 | 25.4 | 1.00 | 12.7 | 0.50 |
| 5/16 | 8.7 | 910 | 2,000 | 17.8 | 4,000 | 35.6 | 8,000 | 48.0 | 106 | 27.9 | 1.10 | 12.7 | 0.50 |
| 3/8 | 10.3 | 1,270 | 2,800 | 24.9 | 5,600 | 49.8 | 11,200 | 70.3 | 155 | 31.2 | 1.23 | 15.7 | 0.62 |
| 1/2 | 13.5 | 2,190 | 4,800 | 42.9 | 9,650 | 85.8 | 19,300 | 123 | 271 | 38.9 | 1.53 | 20.3 | 0.80 |
| 5/8 | 16.7 | 3,350 | 7,400 | 65.8 | 14,800 | 131.6 | 29,600 | 184 | 405 | 48.3 | 1.90 | 25.4 | 1.00 |
| 3/4 | 19.8 | 4,700 | 10,400 | 92.5 | 20,800 | 185.0 | 41,600 | 264 | 582 | 54.6 | 2.15 | 28.4 | 1.12 |
| 7/8 | 23.0 | 6,350 | 14,000 | 124.5 | 28,000 | 249.0 | 56,000 | 368 | 811 | 63.5 | 2.50 | 34.8 | 1.37 |
| 1 | 26.5 | 8,400 | 18,600 | 165.4 | 37,200 | 330.8 | 74,400 | 474 | 1045 | 69.9 | 2.75 | 38.1 | 1.50 |

Available in Hot Dipped Galvanized, Electro Galvanized, and Self-Colored.

NACM84/90 STANDARD LINK CHAIN



PROOF COIL CHAIN NACM84/90 (G30)
NOT INTENDED FOR OVERHEAD LIFTING

| Nominal Size | | Working Load Limit (max) | | Proof Load (min) | | Min. Breaking Load | | Weight Per 100' | | Inside Length (max) | | Inside Width (min) | |
|--------------|------|--------------------------|--------|------------------|--------|--------------------|--------|-----------------|------|---------------------|--------|--------------------|--------|
| inches | mm | kg | lb | kn | lb | kn | lb | kg | lb | mm | inches | mm | inches |
| 1/8 | 4.0 | 170 | 375 | 3.6 | 800 | 7.1 | 1,600 | 9.0 | 19.8 | 23.9 | 0.94 | 6.4 | 0.25 |
| 3/16 | 5.5 | 365 | 800 | 7.2 | 1,600 | 14.3 | 3,200 | 18.3 | 40.3 | 24.8 | 0.98 | 7.7 | 0.30 |
| 1/4 | 7.0 | 580 | 1,300 | 11.6 | 2,600 | 23.1 | 5,200 | 30.0 | 66.1 | 31.5 | 1.24 | 9.8 | 0.38 |
| 5/16 | 8.0 | 860 | 1,900 | 15.1 | 3,400 | 30.2 | 6,800 | 39.0 | 86.0 | 32.8 | 1.29 | 11.2 | 0.44 |
| 3/8 | 10.0 | 1,200 | 2,650 | 23.6 | 5,300 | 47.1 | 10,600 | 64.5 | 142 | 35.0 | 1.38 | 14.0 | 0.55 |
| 1/2 | 13.0 | 2,030 | 4,500 | 39.8 | 8,950 | 79.6 | 17,900 | 110 | 242 | 45.5 | 1.79 | 18.2 | 0.72 |
| 5/8 | 16.0 | 3,130 | 6,900 | 60.3 | 13,600 | 120.6 | 27,200 | 162 | 357 | 56.0 | 2.20 | 20.0 | 0.79 |
| 3/4 | 20.0 | 4,800 | 10,600 | 94.3 | 21,200 | 188.5 | 42,400 | 254 | 560 | 70.0 | 2.76 | 25.0 | 0.98 |
| 7/8 | 22.0 | 5,810 | 12,800 | 114.1 | 25,600 | 228.1 | 51,200 | 306 | 675 | 77.0 | 3.03 | 27.5 | 1.03 |
| 1 | 26.0 | 8,140 | 17,900 | 159.1 | 35,800 | 318.2 | 71,600 | 419 | 924 | 90.9 | 3.58 | 31.7 | 1.25 |

Available in Hot Dipped Galvanized, Electro Galvanized, and Self-Colored.

5978 Armour Drive Houston, Texas 77020 | Tel: (713) 678-8141 | Toll Free: (866) 678-8141 | Fax: (713)678-8624